

About Factory Resets



A factory reset on the NF12 returns all settings to the default settings as it was when shipped from the factory.



Important – It is particularly important to perform a factory reset after upgrading the NF12 firmware to ensure the firmware installation is completed correctly.

Factory Reset Methods

There are two methods that can be used to perform a successful factory reset:

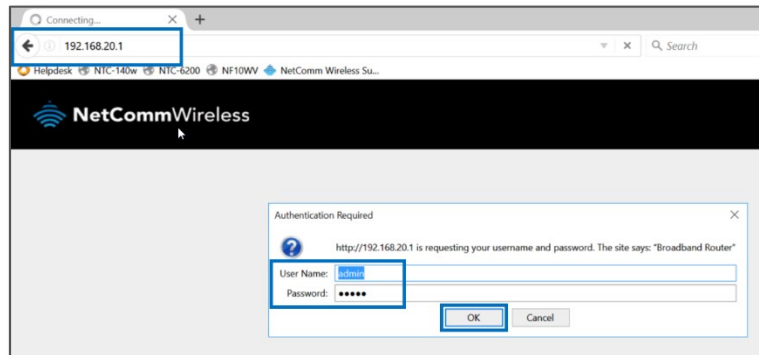
-  Use the NF12's graphical user interface (GUI) to complete a factory reset.
-  Manually perform a factory reset using the reset pinhole at the back of the NF12.

This guide will explain both methods to complete a successful factory reset.

Web Interface Factory Reset

Log in to the Web Interface

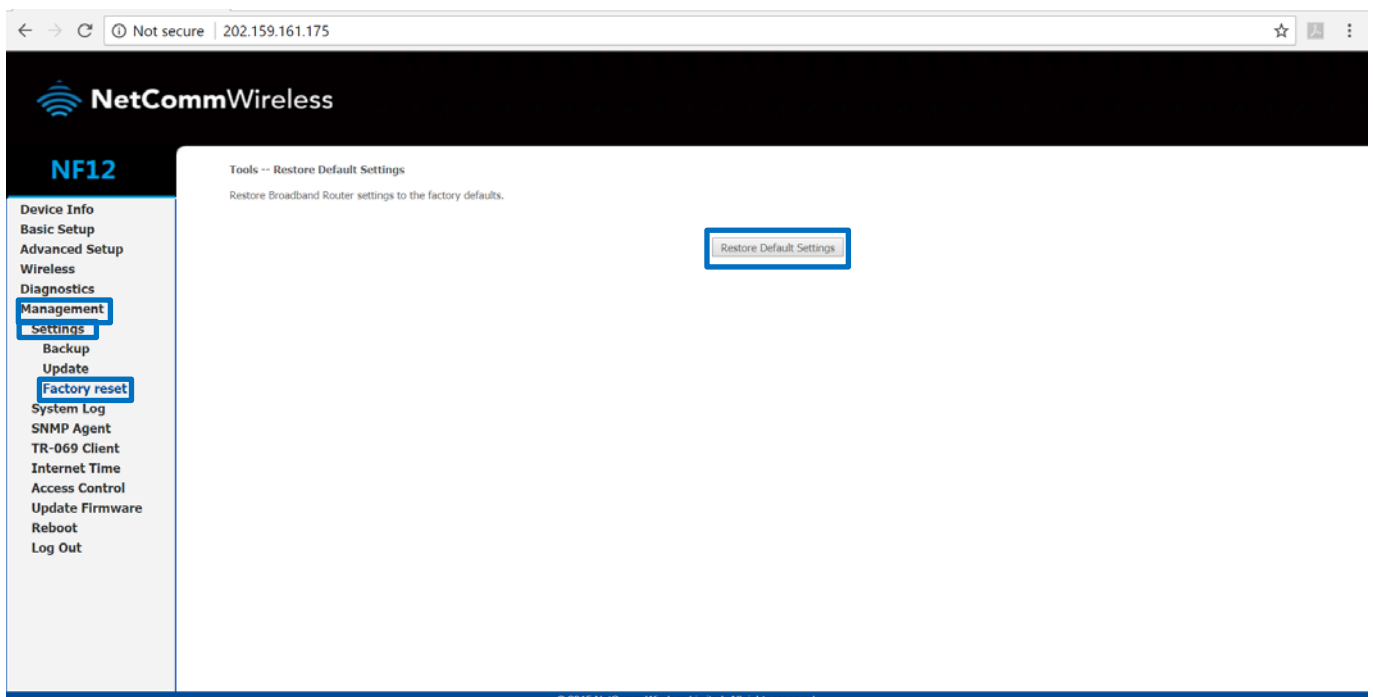
- 1 Open a web browser (such as Internet Explorer, Google Chrome or Firefox), type <http://192.168.1.1> into the address bar and press **Enter**.
- 2 At the login screen, type **admin** into both the **User Name** and the **Password** fields and click **OK** or **Log In**.



Login screen

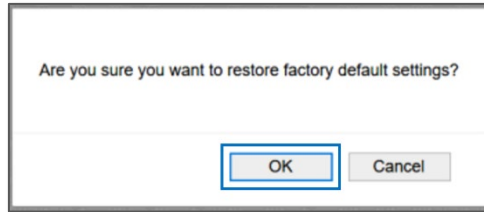
Restore Default Settings from Web interface

- 1 From the **Management** menu on the left hand side of the screen select the **Settings** option and then select the **Factory Reset** option from its sub-menu.
- 2 The **Tools -- Restore Default Settings** screen displays:



Tools – Restore Default Settings screen

- 3 To reset the NF12 to its factory settings, click the **Restore Default Settings** button.
- 4 A pop-up dialog box will prompt: “Are you sure you want to restore factory default settings?”



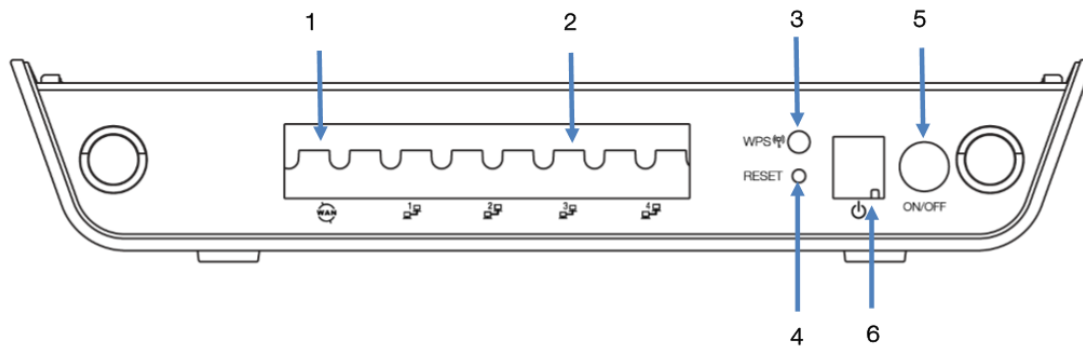
Reset command confirmation dialog

- 5 Click **OK** to confirm the reset.
- 6 The NF12 will reboot.
- 7 After the NF12 has rebooted you will need to log in to the NF12 and re-enter your broadband connection settings such as your **Broadband User ID** and **Password**, etc.

Manual Factory Reset

- 1 Ensure the NF12 is powered on.
- 2 On the back side of the NF12, there is a small hole in the plastic with the word “Reset” printed above it.

This is the recessed reset button:



NUMBER	INTERFACE	DESCRIPTION
1	WAN	Gigabit WAN port for connection to a WAN network.
2	LAN 1-4	Gigabit Ethernet LAN ports. Connect your Ethernet based devices to one of these ports for high-speed internet access.
3	WPS button	Activate the WiFi WPS function by press/hold the WPS/RESET button for 1-3 seconds
4	Reset button	To reset the NF12 to the factory default settings, use a paper clip to hold down the reset button for 3 seconds, and then release it.
5	Power jack	Connection point for the included power adapter. Connect the power supply here.
6	Power button	Turns the NF12 on or off.

Back panel of NF12 showing Reset pinhole

- 3 Insert the end of a paper-clip or other rigid, thin piece of metal into the **Reset** pinhole and depress and hold in for 3 seconds

If this does not happen:

 - a Disconnect the power supply cable for 30 seconds and then reconnect it.
 - b Then depress the **Reset** button and hold in for 3 seconds.
- 4 The NF12 is back to its factory defaults, you now need to reconfigure the broadband settings via the user interface. To reconfigure:
 - a Open a web browser (such as Internet Explorer, Google Chrome or Firefox), type <http://192.168.1.1> into the address bar and press **Enter**.
 - b At the login screen, type **admin** into both the **User Name** and the **Password** fields and click **OK** or **Log In**.
 - c Reconfigure the settings.



Note – If you have backed up your configuration, you can restore your settings by uploading your **.config** file.