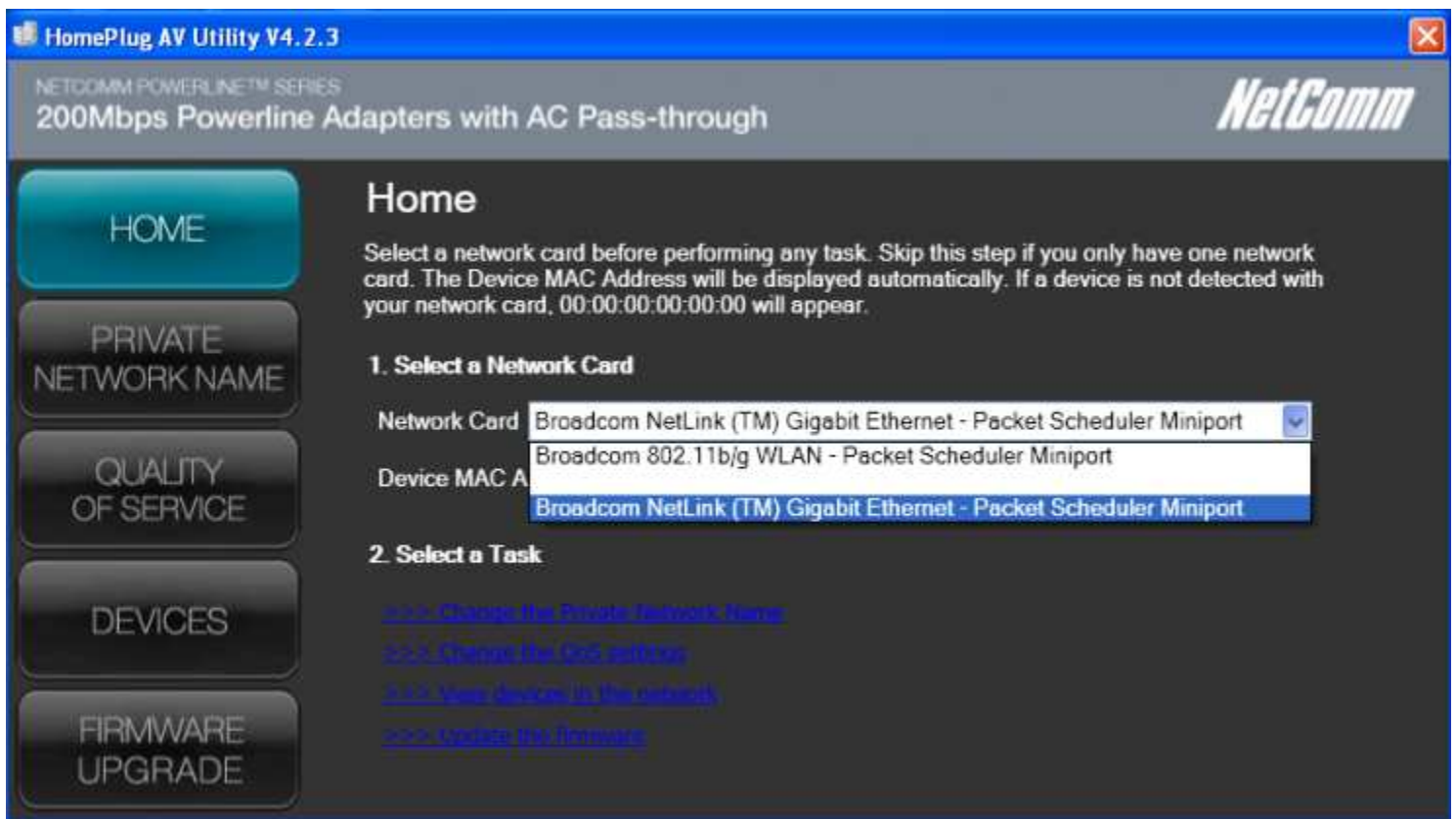




Connecting NP204 with NP202Wn
(NP204, NP202Wn)

Connecting NP204 with NP202Wn

1. Connect only the NP204 pair to the computer (one to the computer and another to your modem/router or devices which you require to access). Install the utility software.
2. Make sure to select the Network Card to your computer's ethernet port network card, in the example below "Broadcom NetLink™ Gigabit Ethernet- Packet Scheduler Miniport".



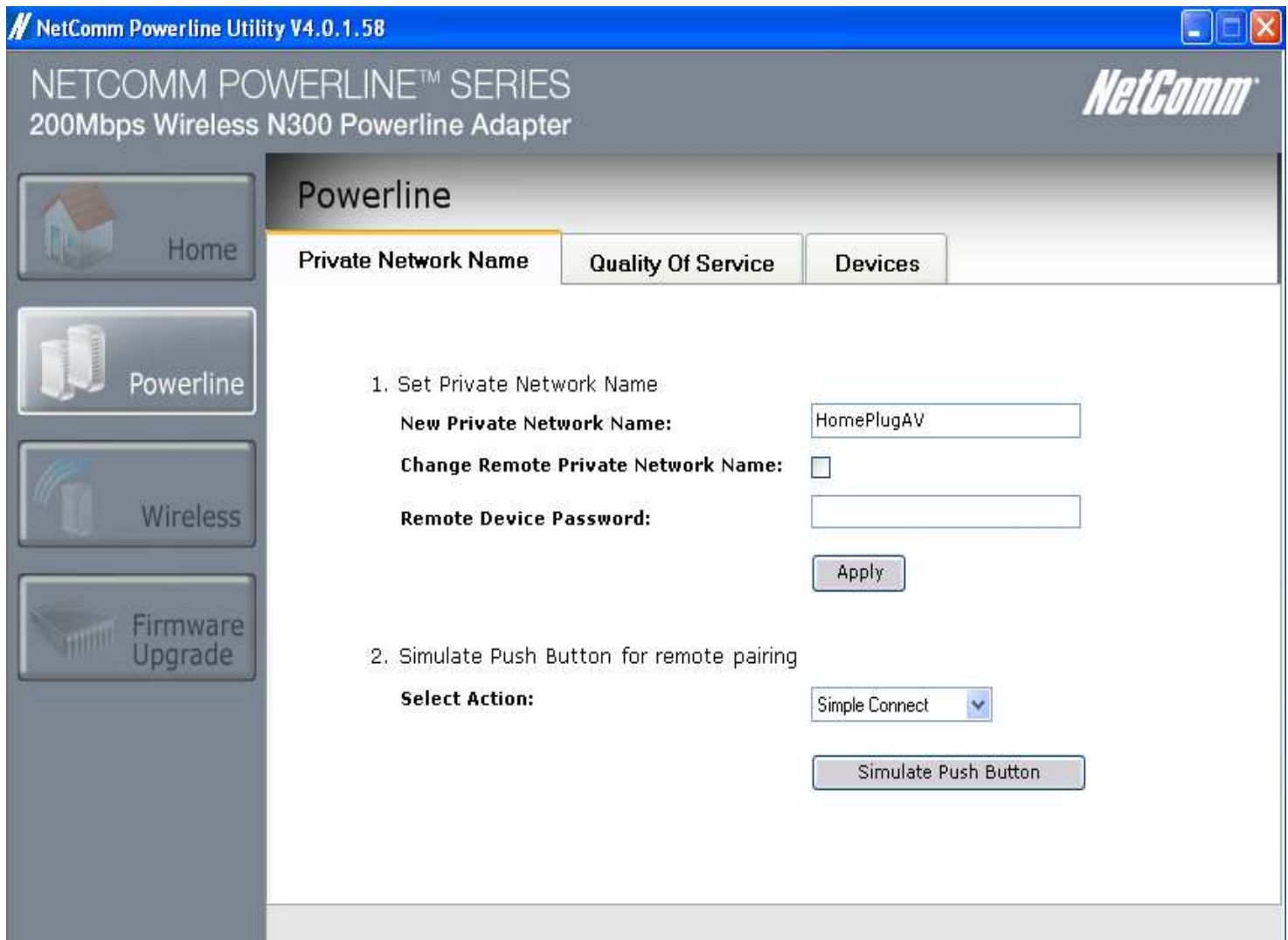
3. Please make a note of the Network name which by default is "**PrivateNetworkName**"

The screenshot shows the 'HomePlug AV Utility V4.2.3' window. The title bar includes the version number and a close button. The main header area displays 'NETCOMM POWERLINE™ SERIES' and '200Mbps Powerline Adapters with AC Pass-through' on the left, and the 'NetComm' logo on the right. A vertical sidebar on the left contains five menu items: 'HOME', 'PRIVATE NETWORK NAME' (highlighted in blue), 'QUALITY OF SERVICE', 'DEVICES', and 'FIRMWARE UPGRADE'. The main content area is titled 'Private Network Name' and contains the following text: 'To change the Private Network Name of a local powerline device, input the Private Network Name and then click Apply. For remote devices, additional steps are required. Select Change Private Network Name of remote device and then input the Device ID.' Below this text, there is a section titled 'Private Network Name to be set' with a text input field containing 'PrivateNetworkName'. To the left of this field is a checkbox labeled 'Change Private Network Name of remote device'. Below the text input field is another text input field labeled 'Device ID'. An 'Apply' button is located below the 'Device ID' field. To the right of the 'Device ID' field is a 'Simulate Push Button' section. This section contains the text 'Select an Action and Click Simulate Push Button', an 'Action' dropdown menu currently set to 'Simple Connect', and a 'Simulate Push Button' button.

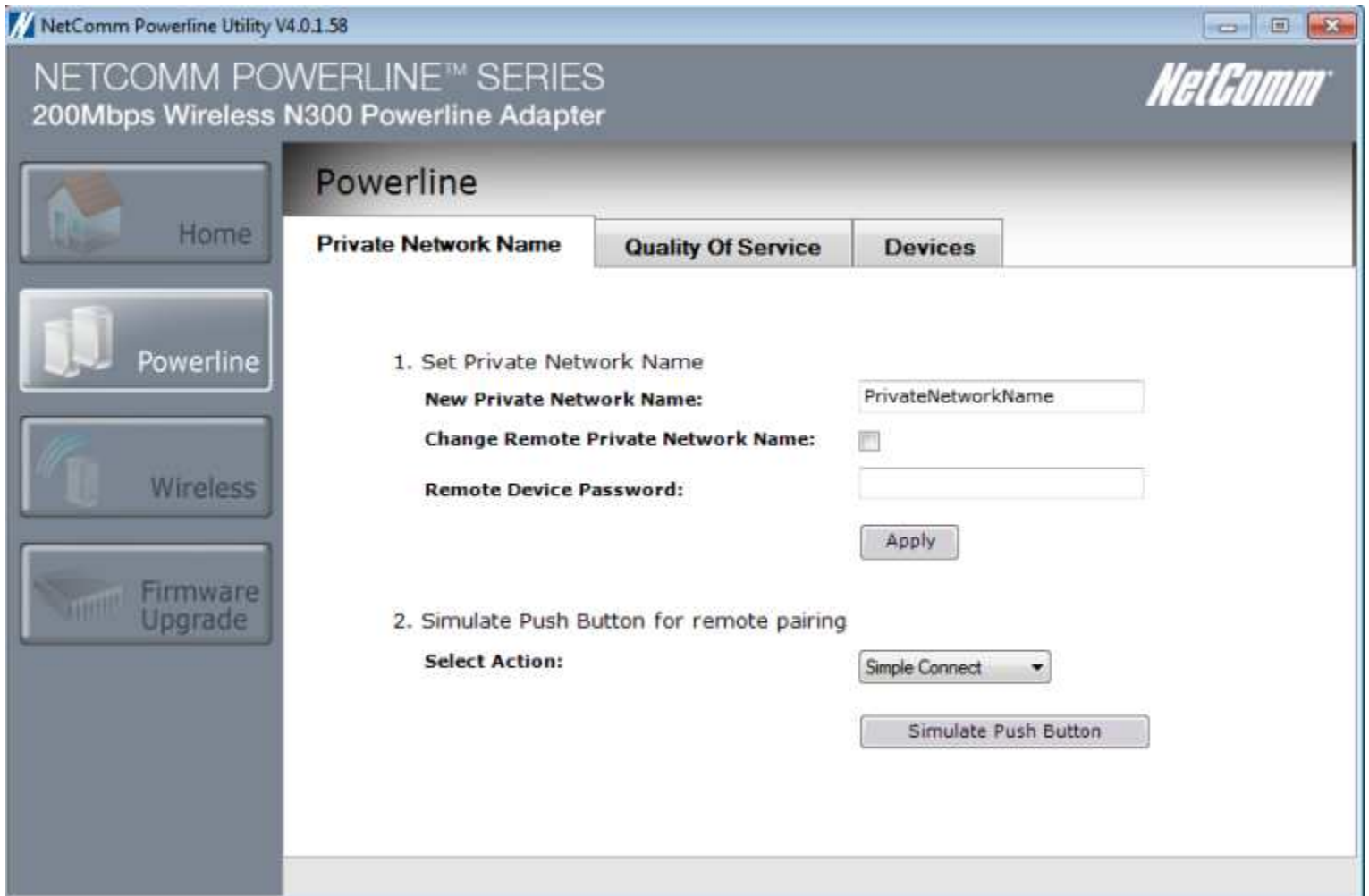
4. Unplug the NP204 from the power and connect only the NP202Wn directly to the computer (for best/easy result use second computer. This is because the NP202Wn and NP204 utilities cannot co-exist on the same computer.). Install the NP202Wn utility software and make a note of the default network name which is "**HomePlugAV**"



5. By default the Network name on NP202Wn is "**HomePlugAV**", as shown below.



6. Change the network name to "**PrivateNetworkName**" and press Apply. With "Simple Connect" as the selected action press the "**Simulate Push Button**" button.



NOTE: For the NP202Wn to work along with NP204 or vice-versa both units must have the same Private Network name. The network name of either units (NP202Wn or NP204) can be changed as explained above.

8. Now plug the entire power line units (both the NP204 and NP202Wn units) to the power supply.
9. Connect the NP204 to the computer with the NP204 utility software and the NP202Wn to the computer with the NP202Wn utility software.
10. Go to the utility software for each device and Click "**Simulate Push Button**" of each. All the connection lights of each unit should now be on. If the lights on each unit are not on unplug the affected unit and replug after 10 seconds.

11. Now the entire home plug network have same Network name "**PrivateNetworkName**". The connection light should be lit on the entire units indicating all can detect each other and work together.