

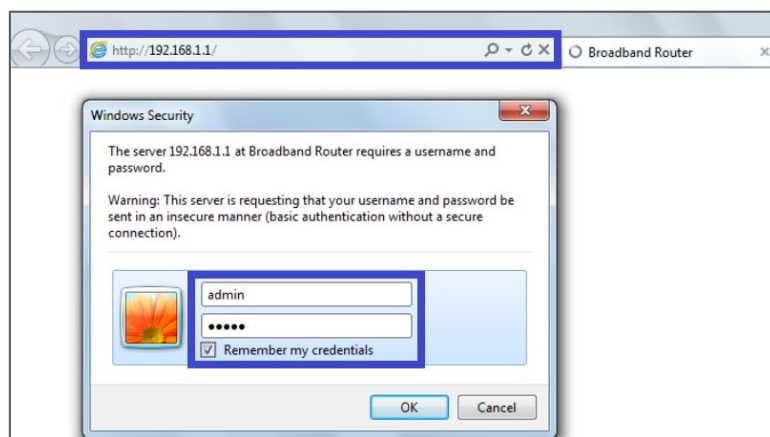
Remote Administration Overview

Remote administration allows you to access the NF12 web User Interface from a remote computer connected to the internet. This can also be used to enable your ISP (Internet Service Provider) to check your settings if you experience connection issues.

Before enabling remote access to your NF12, we recommend changing the username and password required to login. Please refer to the ***Change Administration Password Guide*** document for assistance with this. You can also limit access to a specific IP or subnet. This will prevent unauthorized access to your NF12.

Enabling Remote Administration

- 1 Open a web browser (such as Internet Explorer, Google Chrome or Firefox), type <http://192.168.1.1> into the address bar and press **Enter**.
- 2 At the login screen, type **admin** into both the **User Name** and the **Password** fields and click **OK** or **Log In**.



- 3 From the **Management** menu on the left, then select **Access Control** and then **Services Control** from the sub menu.
- 4 The **Access Control -- Services** page will open:

NF12

- Device Info
- Basic Setup
- Advanced Setup
- Wireless
- Diagnostics
- Management
- Settings
- System Log
- SNMP Agent
- TR-069 Client
- Internet Time
- Access Control
- Passwords
- Services Control
- Update Firmware
- Reboot
- Log Out

Access Control -- Services

Services access control list (SCL) enable or disable the running services.

Services	LAN	WAN	Port
HTTP	<input checked="" type="checkbox"/> enable	<input checked="" type="checkbox"/> enable	8080
TELNET	<input checked="" type="checkbox"/> enable	<input type="checkbox"/> enable	23
SSH	<input type="checkbox"/> enable	<input type="checkbox"/> enable	22
FTP	<input checked="" type="checkbox"/> enable	<input type="checkbox"/> enable	21
TFTP	<input checked="" type="checkbox"/> enable	<input type="checkbox"/> enable	69
ICMP	<input checked="" type="checkbox"/> enable	<input type="checkbox"/> enable	0
SNMP	<input checked="" type="checkbox"/> enable	<input type="checkbox"/> enable	161

- 5 Tick the **enable** checkbox of the **WAN** option for the **HTTP Service**.
- 6 This is highly recommended to change the **Port** to something other than **80**. This is just a safety measure and part of best practices. Please be informed that changing port number will be applied both in LAN and WAN side.
- 7 Click the **Apply/Save** button.

You should now be able to access your NF17ACV locally, via the address:

`http://<your LAN IP address>:<port number>`

You should now be able to access your NF17ACV from internet, via the address:

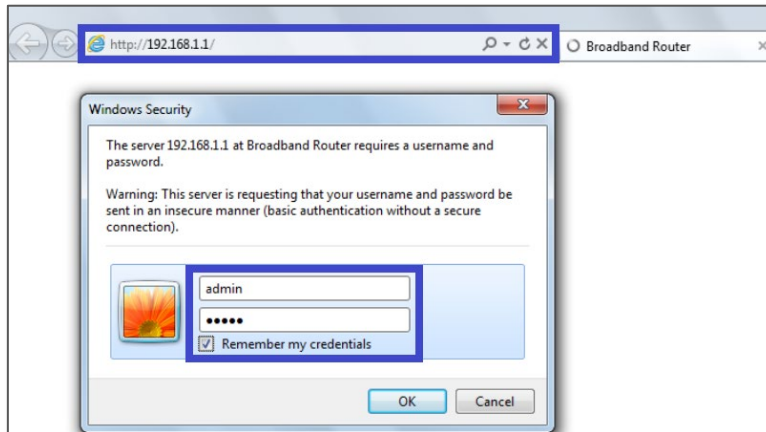
`http://<your WAN IP address>:<port number>`

You can find your external (public) IP address by going to www.ipmonkey.com or by clicking on **WAN** option under **Device Info**.

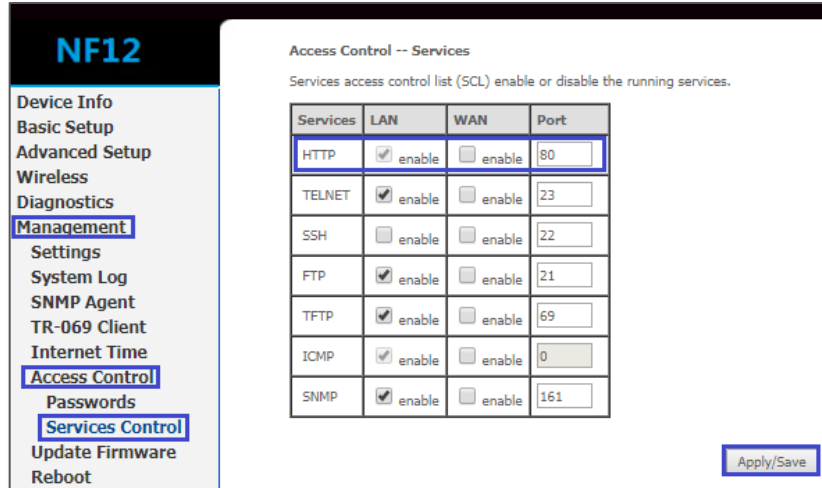
Restricting Remote Administration to a Particular IP Address(es)

Apart from changing default admin password and web port, you may secure your NF12 by configuring which IP address or addresses can remotely access. You can configure either a single IP address or a block of addresses to be allowed access.

- 1 Open a web browser (such as Internet Explorer, Google Chrome or Firefox), type <http://192.168.1.1> into the address bar and press **Enter**.
- 2 At the login screen, type **admin** into both the **User Name** and the **Password** fields and click **OK** or **Log In**.



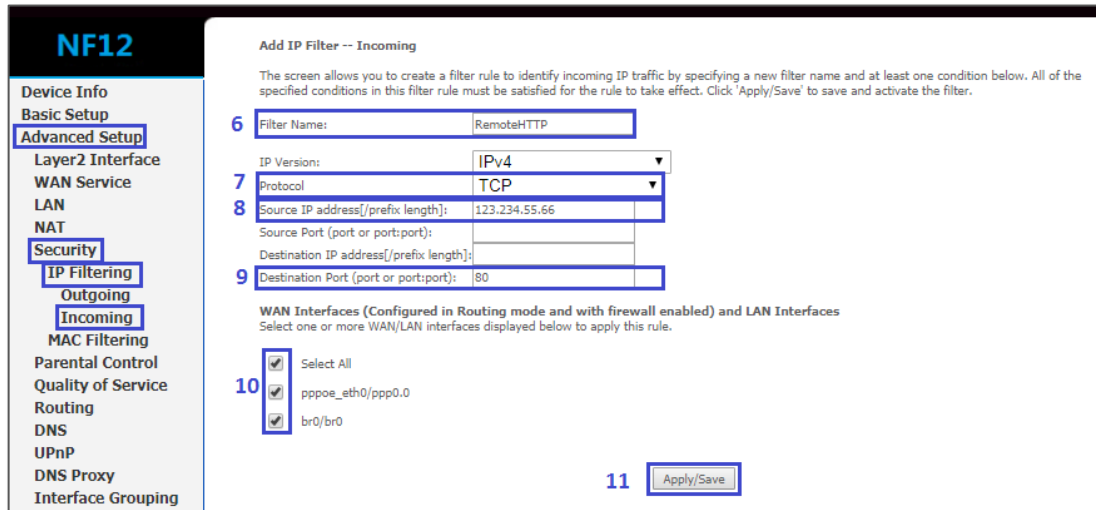
- 3 From the **Management** menu on the left, then select **Access Control** and then **Service Control** from the sub menu.



- 4 Please make sure that **WAN HTTP** is not enabled, as we did in previous instructions. If in case you left it enabled, it'll open the service to all IP addresses, overriding the specific rule that we are going to configure for an IP.
- 5 Next, From the **Advanced Setup** menu on the left, select **Security** and then **IP Filtering** and **Incoming** from the sub menu.
- 6 From the next appearing page, Select a name of your choice for the filter.
- 7 Select **Protocol** as **TCP**.

- 8 In the **Source IP/Prefix Length** text box enter the IP address (range) of the location that you want to allow access to your NF12 from. This should be a public IP address which you should know beforehand.

This might be an IP address provided by your ISP support team, NetComm support team or a friend who is willing to help you configure something remotely.



NF12

Device Info
Basic Setup
Advanced Setup
 Layer2 Interface
 WAN Service
 LAN
 NAT
Security
 IP Filtering
 Outgoing
 Incoming
 MAC Filtering
 Parental Control
 Quality of Service
 Routing
 DNS
 UPnP
 DNS Proxy
 Interface Grouping

Add IP Filter -- Incoming

The screen allows you to create a filter rule to identify incoming IP traffic by specifying a new filter name and at least one condition below. All of the specified conditions in this filter rule must be satisfied for the rule to take effect. Click 'Apply/Save' to save and activate the filter.

6 Filter Name: RemoteHTTP

IP Version: IPv4

7 Protocol: TCP

8 Source IP address(/prefix length): 123.234.55.66

Source Port (port or port:port):

Destination IP address(/prefix length):

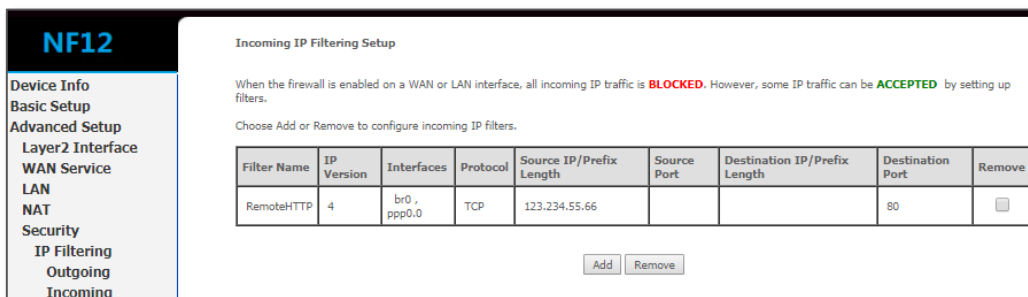
9 Destination Port (port or port:port): 80

WAN Interfaces (Configured in Routing mode and with firewall enabled) and LAN Interfaces
 Select one or more WAN/LAN interfaces displayed below to apply this rule.

10 Select All
 pppoe_eth0/ppp0.0
 br0/br0

11

- 9 The **Destination port** number should be **80**.
- 10 **Select All** available **WAN interfaces**.
- 11 Press **Apply/Save** to apply the configuration.



NF12

Device Info
Basic Setup
Advanced Setup
 Layer2 Interface
 WAN Service
 LAN
 NAT
Security
 IP Filtering
 Outgoing
 Incoming

Incoming IP Filtering Setup

When the firewall is enabled on a WAN or LAN interface, all incoming IP traffic is **BLOCKED**. However, some IP traffic can be **ACCEPTED** by setting up filters.

Choose Add or Remove to configure incoming IP filters.

Filter Name	IP Version	Interfaces	Protocol	Source IP/Prefix Length	Source Port	Destination IP/Prefix Length	Destination Port	Remove
RemoteHTTP	4	br0 , ppp0.0	TCP	123.234.55.66			80	<input type="checkbox"/>

Now only that IP address (range) can access your NF12's web interface.

However, you always can configure through web interface from local LAN.