

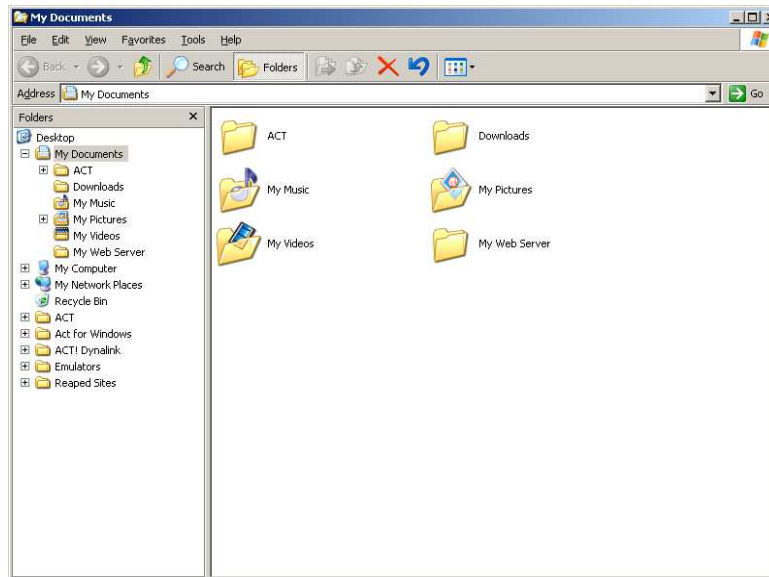


How do I Access the USB Drive?

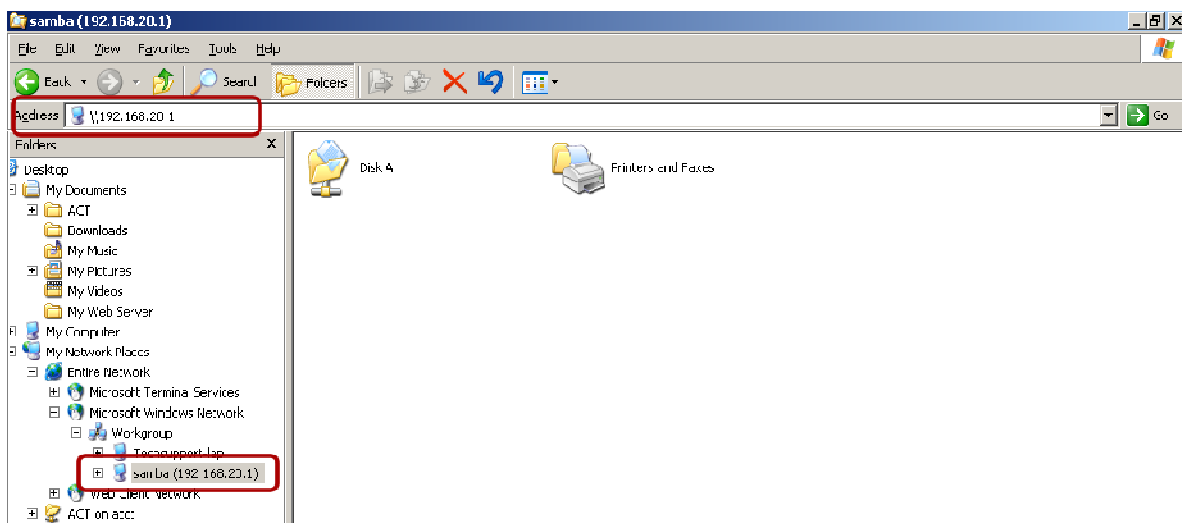
(3G41WT)

How do I Access a USB Drive Connected to my 3G41WT?

1. Ensuring the 3G41WT is powered on, insert your USB drive into one of the USB access ports on the 3G41WT.
2. On a computer that is connected to the 3G41WT open a Windows Explorer window (Select Start > All Programs > Accessories > Windows Explorer).



3. In the address bar enter two back slashes, the IP address of the router, 192.168.20.1. (\\192.168.20.1) and press the Enter key.



4. The files on the USB drive are now available. In the example below all files and folders can be found in the Disk A folder.

