

Password Overview

Changing the default password allows you to prevent unauthorized access to the administration page of your NF17ACV.

You can change both the default password and the default username.

Remember your username and password

Once the username and password have been changed, you must remember the words or strings of characters that you have defined.

If you forget your administration page login details, you will need to perform a factory reset to restore the default username and password of admin, see below. The major drawback of a factory reset is that it will also clear any stored settings on your NF17ACV. If you have made custom settings and have neglected to back up your settings, you will have to re-enter all of them into the NF17ACV.



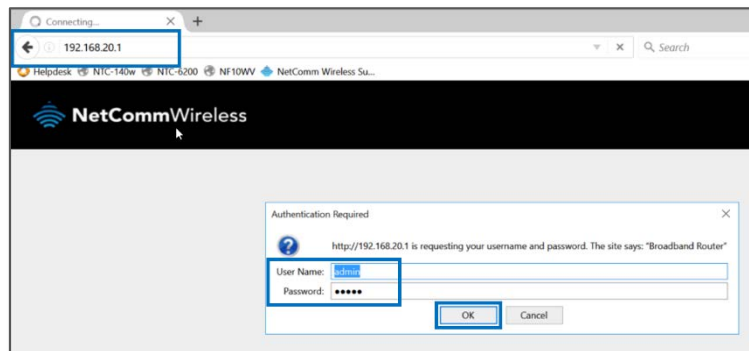
Important – NetComm Technical Support does not have a record of your personal username and/or password.

Change the default password

This guide will take you through the process of changing the password required to login to the Administration page of your NF17ACV.

Initial log in to the Web interface of the NF17ACV

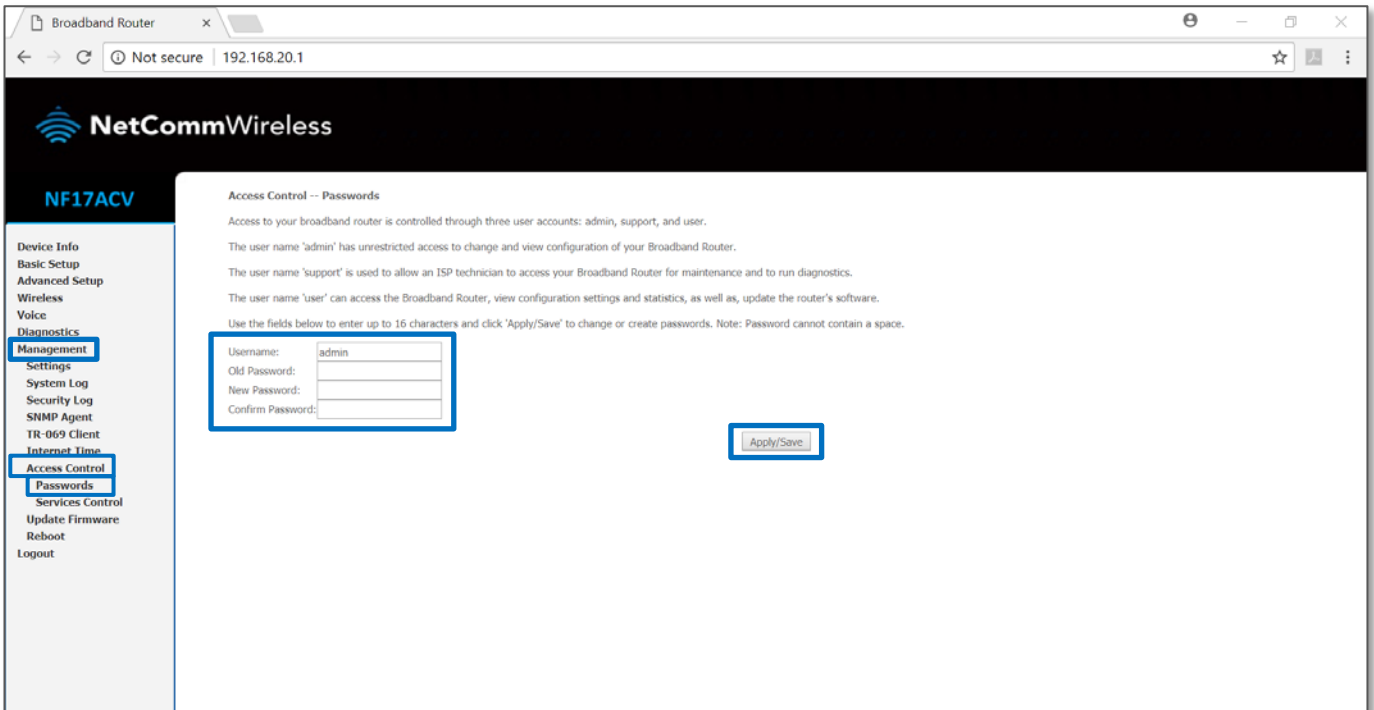
- 1 Open a web browser (such as Internet Explorer, Google Chrome or Firefox), type **http://192.168.20.1** into the address bar and press **Enter**.



- 2 At the login screen, type **admin** into both the **User Name** and the **Password** fields and click **OK**.

Customise the username and password

- 1 From the **Management** menu on the left, select **Access Control** and then **Passwords** from its sub-menu.
- 2 The **Access Control – Passwords** screen will open:



Access Control -- Passwords

Access to your broadband router is controlled through three user accounts: admin, support, and user.

The user name 'admin' has unrestricted access to change and view configuration of your Broadband Router.

The user name 'support' is used to allow an ISP technician to access your Broadband Router for maintenance and to run diagnostics.

The user name 'user' can access the Broadband Router, view configuration settings and statistics, as well as, update the router's software.

Use the fields below to enter up to 16 characters and click 'Apply/Save' to change or create passwords. Note: Password cannot contain a space.

Username:

Old Password:

New Password:

Confirm Password:

- 3 Enter "**admin**" as the **Username**.
- 4 Enter your new user name into the **New Username** field.
- 5 Enter the current password into the **Old Password** field (initially this will be "**admin**").
- 6 Enter a new password into the **New Password** field.
- 7 Enter the new password once again into the **Confirm Password** field.
- 8 Click the **Apply/Save** button.



Important – Remember your personal user name and password.
If you forget it, you will have to factory reset and reset or restore all of your internet settings.