

# Parental Control Setup Guide

## NF18ACV NC2 FAQs

## Parental Control overview

---

The Parental Control feature allows you to take advanced measures to ensure that devices connecting to the Internet from your NF18ACV are used only when and how you decide.

This guide has been revised to include the latest Parental Control functionality from the NF18ACV's new NC2 web user interface.

Access restrictions are applied to Profiles. You define profiles as groups of wired and wireless devices, normally these devices are used by the same person or group of people. For example, your 'Child1' profile might include the iPhone, tablet and laptop of your first child.

Profiles can effectively apply to groups of individuals if all of their wired and wireless devices are included in the profile. For example, the profile 'AllMyChildren' would include all of the devices used by all of your children and they would all be subject to the same restrictions.

Once the Profiles have been defined, there are three methods of restricting the Internet access of each profile:

### **Internet Blackout**

All Internet access is cut off for the defined time periods for all devices in a selected profile.

This does not rely on defined Block Lists, Internet access is simply cut off during the times specified.

The following two methods of restricting access rely on Block Lists. Block lists are groups of URLs or internet services that are normally related, for example 'Social Media' or 'Gaming'. Refer to the *Prerequisite 3 – Define block lists* section of this FAQ.

### **Scheduled Blocking**

For each Profile, access to the services contained in a Block List is denied during specified periods of time during the day or week.

### **Permanent (Category) Blocking**

For each Profile, access to the services contained in a Block List is denied permanently and completely.

Before using the Parental Control feature, make sure to activate the Internet Time server synchronization, so that the scheduled times match your local time.

## Contents

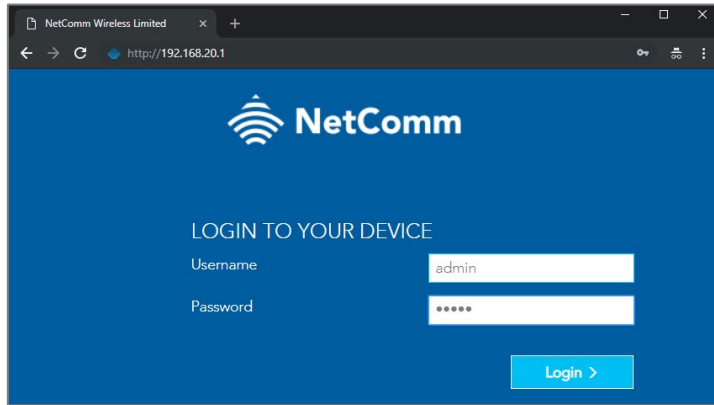
Parental Control overview .....	1
Prerequisites.....	2
Prerequisite 1 – Internet time server synchronization .....	2
Prerequisite 2 – Create profiles .....	3
Prerequisite 3 – Define block lists .....	4
Blocking Methods.....	6
Method 1 – Set Internet blackout periods .....	6
Method 2 – Set Scheduled Blocking periods .....	7
Method 3 – Set Permanent (Category) Blocking.....	10

# Prerequisites

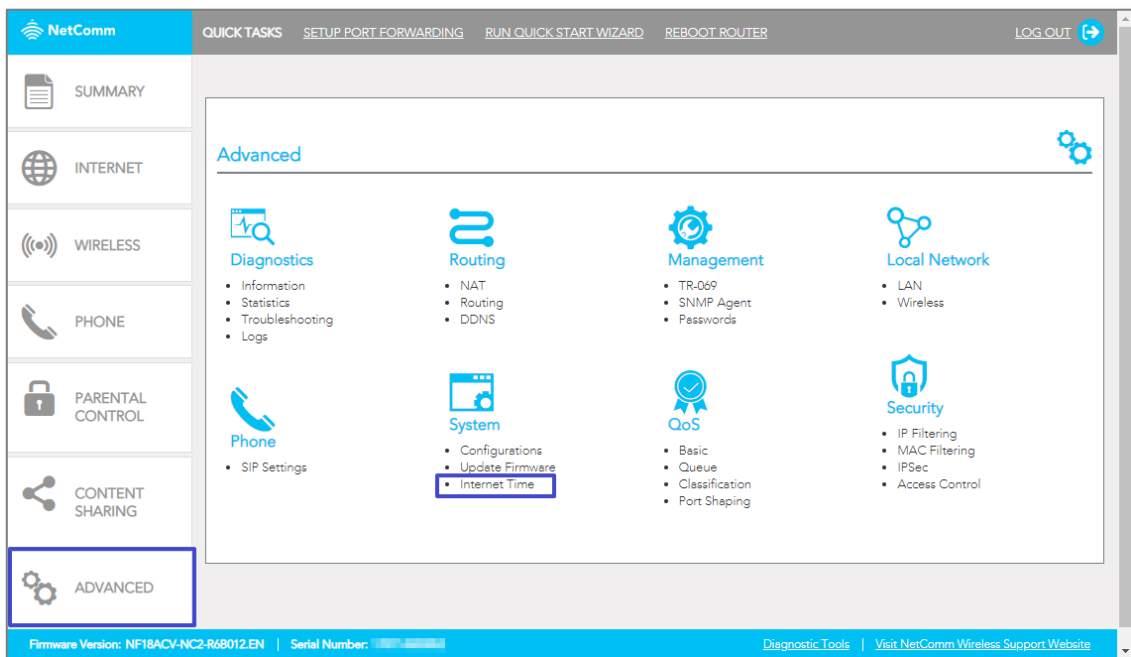
## Prerequisite 1 – Internet time server synchronization

- 1 Open a web browser (such as Google Chrome or Mozilla Firefox), type following address into the address bar and press **Enter**.

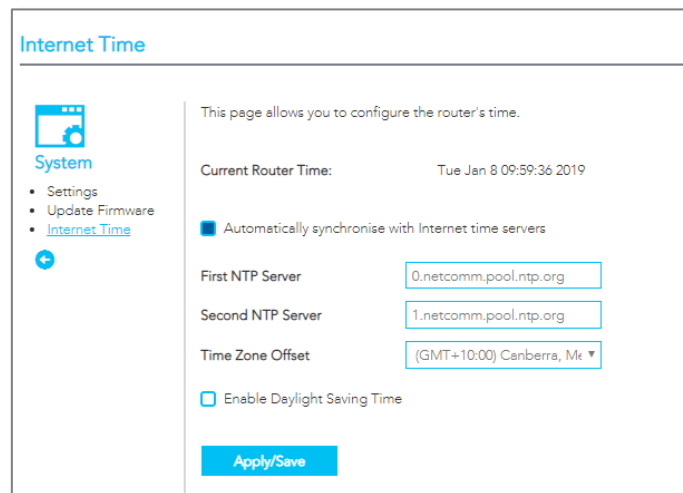
**http://192.168.20.1**



- 2 Enter the following credentials in the **User Name** and **Password** fields:  
User Name: **admin**  
Password: **admin**
- 3 Click the **Login >** button.  
The NF18ACV's web interface will open in the **SUMMARY** page.
- 4 Select the **ADVANCED** menu, then select **Internet Time** from the **System** group.



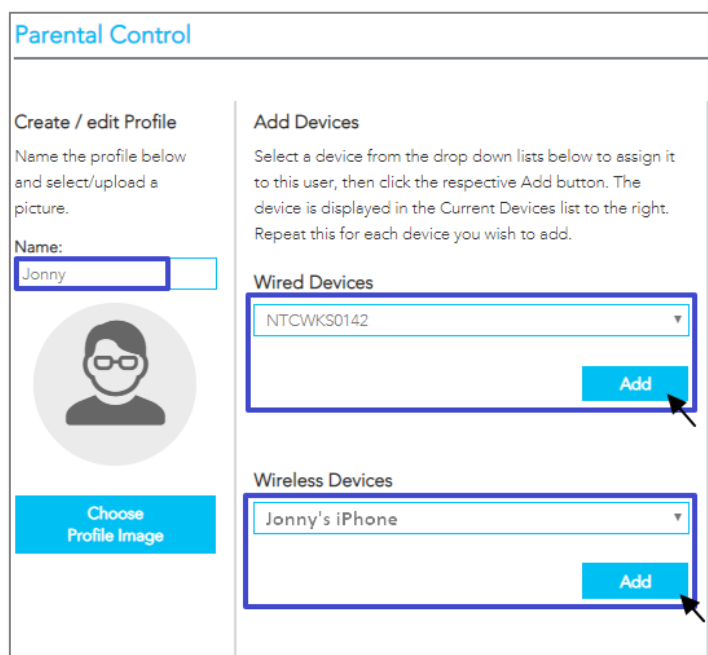
- By default, NetComm NTP servers are configured as **First NTP server** and **Second NTP server**.



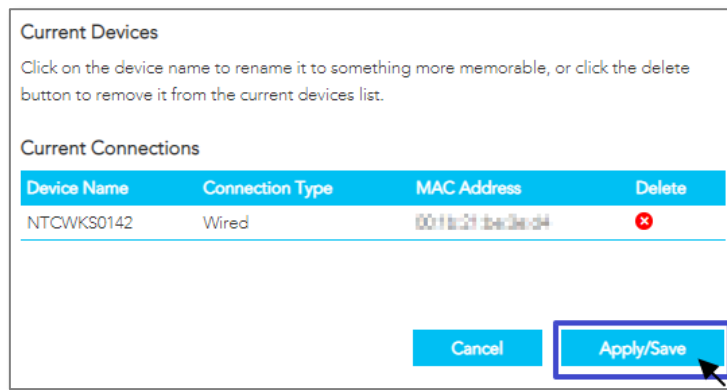
- Check the currently selected **Time Zone Offset** and change it if required from the drop-down menu.
- Select  **Enable Daylight Saving Time**, if required.
- Click **Apply/Save**.

## Prerequisite 2 – Create profiles

- Log in to the Web UI as '**admin**'.
- Open the **PARENTAL CONTROL** menu, then select **Create Profile**.
- Enter a **Name** for this profile.
- Select a device from the **Wired Devices** or **Wireless Devices** lists that you want associated with this profile and click the **Add** button. You can add multiple devices to a profile.



- Each device added will be shown in a row on the list.



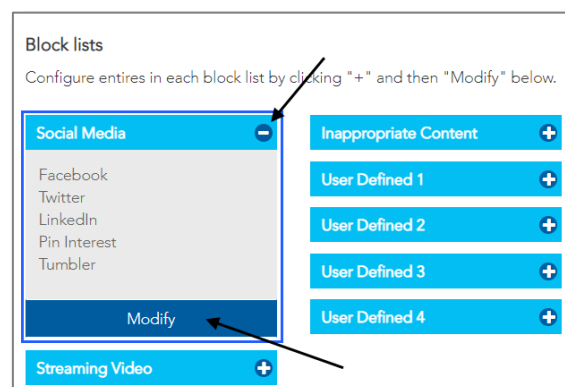
- 6 Click on **Apply/Save** when complete.

## Prerequisite 3 – Define block lists

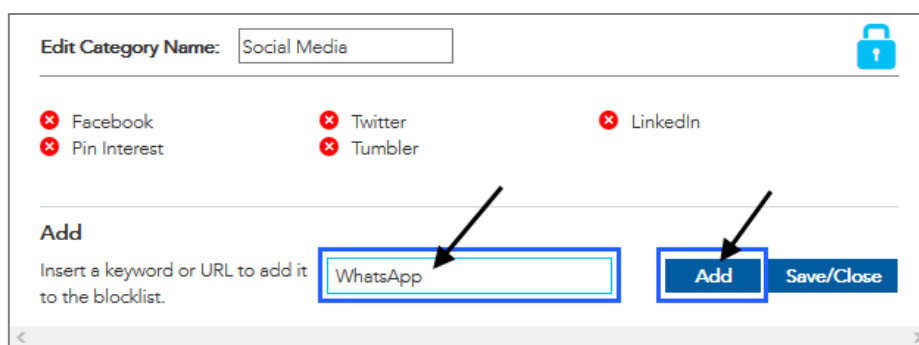
This step is not required if you plan to only use the **Internet Blackout** method of access restriction.

Block Lists must be defined for use in **Scheduled Blocking** and **Permanent (Category) Blocking** methods.

- 1 From the Parental Control start page go to the Block lists section and click the plus **+** button to display the current services or URL addresses in the **Block List**.



- 2 To add more destinations, or to create a new list, click the **Modify** button.



- 3 Enter the relevant **Keyword** or **URL** address in the field and click the **Add** button.
- 4 Click on the **Red cross** icon to remove a destination.



**Note** – The number of block lists is limited to the eight displayed in the **Block lists** section.

5 Click the **Save/Close** button when completed.



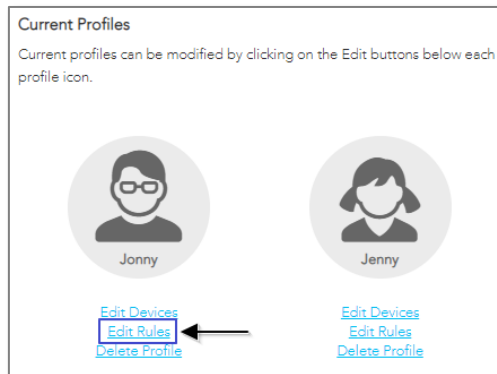
**Note** – Block lists defined here are referred to as **Categories** on the Parental Control scheduling page.

# Blocking Methods

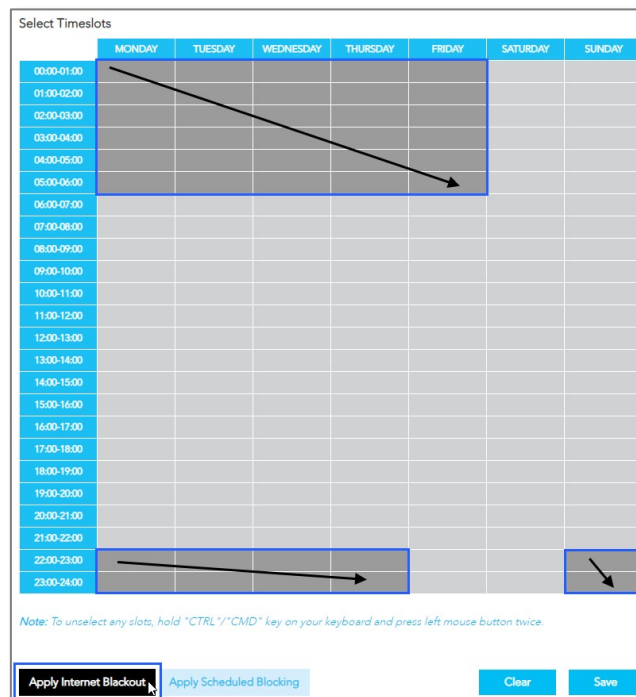
## Method 1 – Set Internet blackout periods

This Parental Control function allows you to cut off all Internet access for all devices listed in in the selected profile on set days and times.

- 1 Navigate to **PARENTAL CONTROL**, under the profile you want to apply the restriction, click on **Edit Rules** to set schedule time.

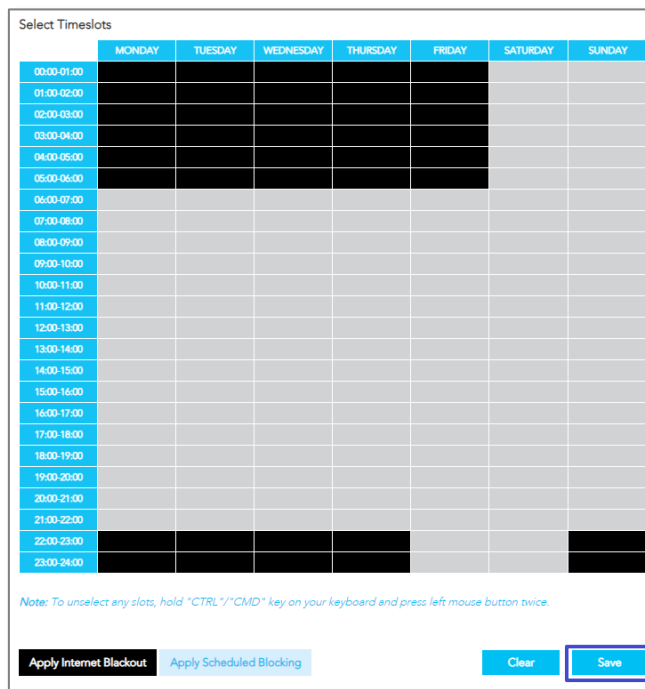


- 2 Go to the **Selected Timeslots** section and click and drag your mouse cursor to select **Timeslots**. To select multiple **Timeslots** at once and hold the **Control (Ctrl)** key down and click and drag in multiple **Timeslots**.



- 3 To unselect any timeslots, select the timeslots, hold the **CTRL/CMD** key down and press the left mouse button twice.
- 4 When you are satisfied with your selection(s), click the **Apply Internet Blackout** button.

5 These Timeslots will now appear **Black** on the Table.



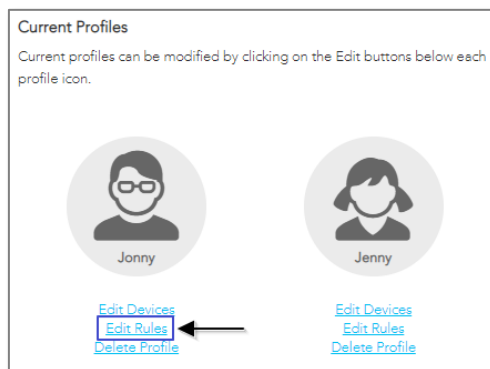
- 6 Click **Save** to apply this **Internet Blackout** schedule to all devices assigned to this profile. The devices in the profile will not be able to access the internet during the blacked out times.
- 7 Alternatively, click **Clear** to clear all **Internet Blackout** (and any **Scheduled Blocking**) timeslots and select new times, etc.


 **Important** – **Internet Blackout** has no affect on **Permanently Blocked** categories (block lists). URLs or websites in those block lists will always be blocked for the profile(s) that they are enabled for. Refer to the *Set Permanent (Category) Blocking* section of this FAQ.

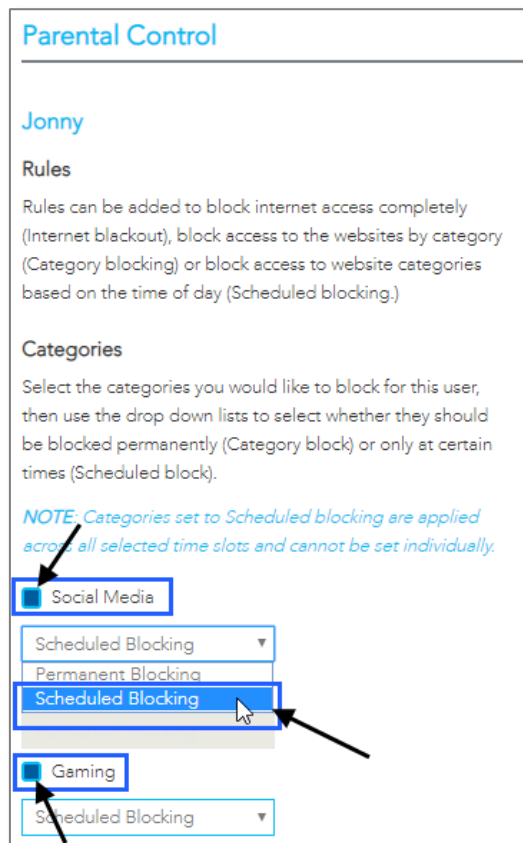
## Method 2 – Set Scheduled Blocking periods

This Parental Control function allows you to restrict Internet access to all destinations or services in a particular Block list for all devices listed in the selected profile on set days and times.

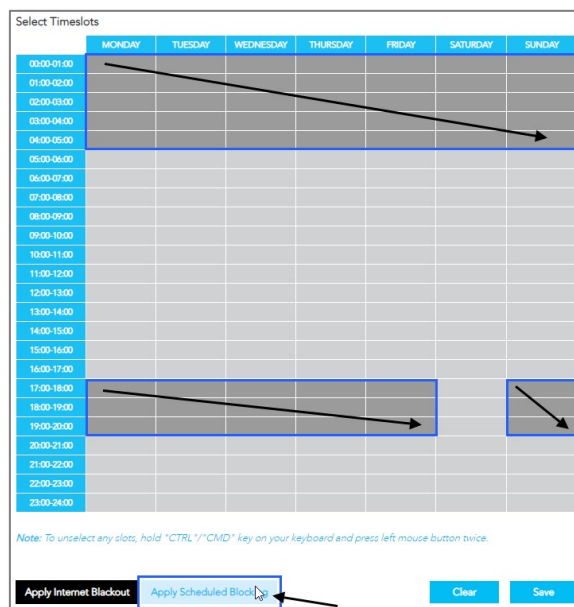
- 1 Navigate to **PARENTAL CONTROL**, under the profile you want to apply the restriction, click on **Edit Rules** to set schedule time.



- 2 In the **Rules** and **Categories** area  select the previously defined Block lists, referred to here as **Categories**, that you want to be restricted by this schedule




- 3 For each  selected **Category**, open its drop-down menu and select **Scheduled Blocking**.
- 4 Go to the **Selected Timeslots** section and click and drag your mouse cursor to select **Timeslots**. To select multiple **Timeslots** at once and hold down the **Control (Ctrl)** button and click and drag in multiple **Timeslots**.



- 5 Click the **Apply Scheduled Blocking** button to block internet access by all the devices in the profile during those time slots.



6 These Timeslots will now appear shaded light blue on the **Select Timeslots** table.



	MONDAY	TUESDAY	WEDNESDAY	THURSDAY	FRIDAY	SATURDAY	SUNDAY
00:00-01:00							
01:00-02:00							
02:00-03:00							
03:00-04:00							
04:00-05:00							
05:00-06:00							
06:00-07:00							
07:00-08:00							
08:00-09:00							
09:00-10:00							
10:00-11:00							
11:00-12:00							
12:00-13:00							
13:00-14:00							
14:00-15:00							
15:00-16:00							
16:00-17:00							
17:00-18:00							
18:00-19:00							
19:00-20:00							
20:00-21:00							
21:00-22:00							
22:00-23:00							
23:00-24:00							

Note: To unselect any slots, hold "CTRL"/"CMD" key on your keyboard and press left mouse button twice.

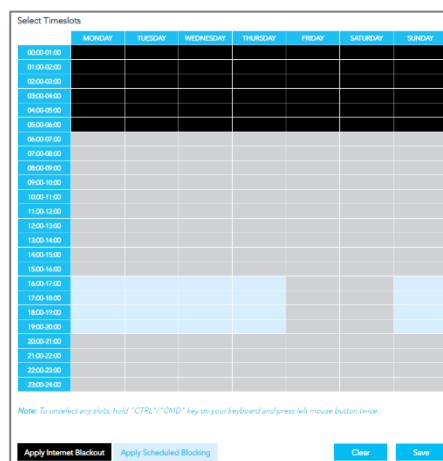
Apply Internet Blackout Apply Scheduled Blocking Clear Save

7 Click **Save** to apply this **Scheduled Blocking** schedule to all devices assigned to this profile.

8 Alternatively, click **Clear** to clear all **Scheduled Blocking** timeslots and select new times, etc.



**Note** – You can mix **Internet Blackout** periods and **Scheduled Blocking** to the same profile. The timeslot schedule page will look similar to this:



	MONDAY	TUESDAY	WEDNESDAY	THURSDAY	FRIDAY	SATURDAY	SUNDAY
00:00-01:00							
01:00-02:00							
02:00-03:00							
03:00-04:00							
04:00-05:00							
05:00-06:00							
06:00-07:00							
07:00-08:00							
08:00-09:00							
09:00-10:00							
10:00-11:00							
11:00-12:00							
12:00-13:00							
13:00-14:00							
14:00-15:00							
15:00-16:00							
16:00-17:00							
17:00-18:00							
18:00-19:00							
19:00-20:00							
20:00-21:00							
21:00-22:00							
22:00-23:00							
23:00-24:00							

Note: To unselect any slots, hold "CTRL"/"CMD" key on your keyboard and press left mouse button twice.

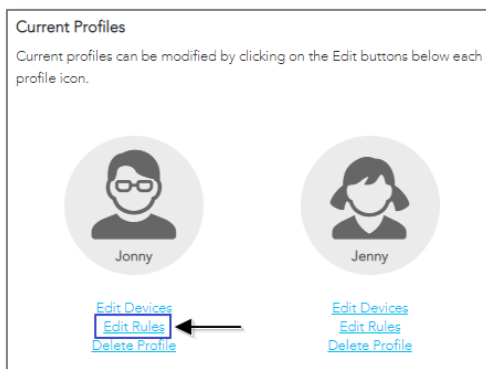
Apply Internet Blackout Apply Scheduled Blocking Clear Save

## Method 3 – Set Permanent (Category) Blocking

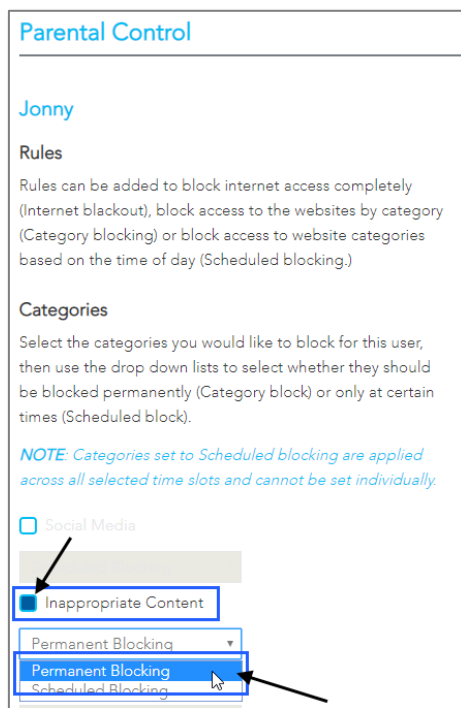
The **Permanent Blocking** functionality ensures that when websites or URLs that you deem unsuitable are added to a blocked list and that list is set to be permanently blocked for a profile, then any website on that list will not be able to be seen by anyone in the selected profile.

The same Blocked list can be permanently blocked by multiple profiles.

- 1 To apply a **Block list** to a profile, click **Edit Rules** on the **Current Profile** you want the block list rule to apply to.



- 2 In the **Rules** and **Categories** area  select the previously defined Block lists, referred to here as **Categories**, that you want to be restricted by this schedule



- 3 For each  selected **Category**, open its drop-down menu and select **Permanent Blocking**.
- 4 Click **Save** to apply this **Permanent Blocking** rule or rules to all devices assigned to this profile.